

BORGHI MEDIEVALI

CONFORME UNI EN 14411-G Bla



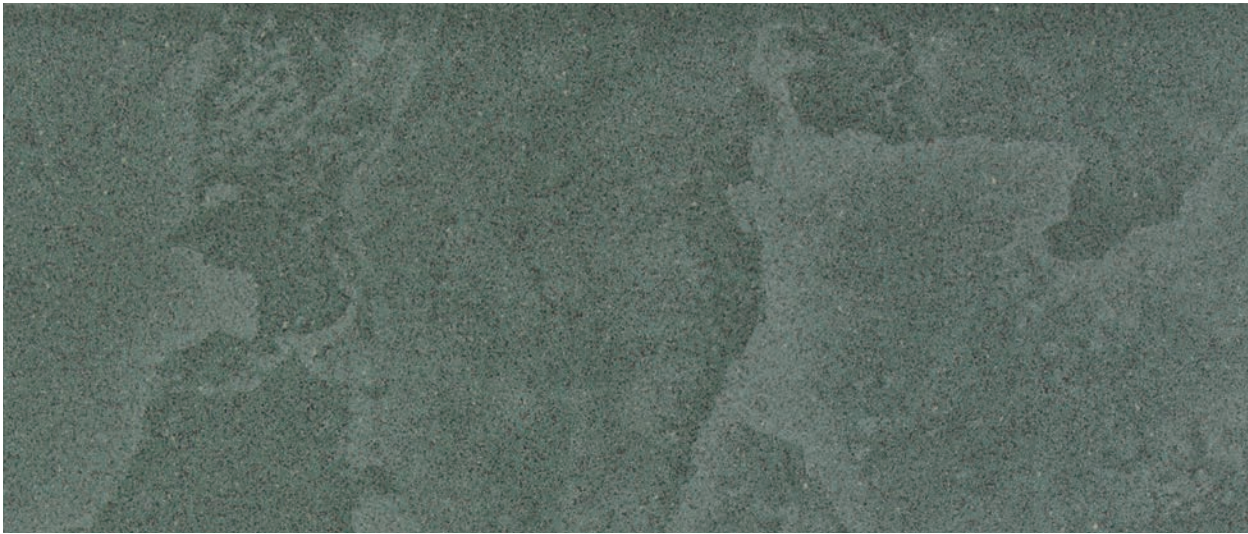
ISO 10545-6
≤ 175 mm²

UNI EN 14411
G Bla/UGL

材料表示方法

ISO 14025 - EN 15804

CORTONA



| Formato Size Format Formatos Format | Struttura Textures Structures Estructuras Strukturen | Spessore Thickness Epaisseur Espessor Stärke | Pz/Scatola Pieces/Box Pièces/Boîte Piezas/Caja Stück/Karton | Mq/Scatola SqM/Box M ² /Boîte M ² /Caja Qm/Karton | Kg/Scatola Kg/Box Kg/Boîte Kg/Caja Kg/Karton | Scatole/Pallet Box/Pallet Boîte/Palette Caja/Palet Karton/Palette | Mq/Pallet SqM/Pallet M ² /Palette M ² /Palet Qm/Palette | Kg/Pallet Kg/Pallet Kg/Palette Kg/Palet Kg/Palette | Codice Articolo Item Number Número d'Article Código Artículo Artikelnummer |
|---|--|--|---|---|--|---|---|--|--|
| 30x30 cm 12"x12" | Strutturato R11 | 8,4 | 15 | 1,35 | 25,00 | 60 | 81,00 | 1500 | 5354 |
| 15x15 cm 6"x6" | Strutturato R11 | 8,4 | 44 | 1,00 | 18,00 | 64 | 64,00 | 1152 | 5089 |

Note: Pesì indicatìvi Kg/Mq - Approximate weights Kgs/Sqm

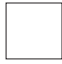


BORGHI MEDIEVALI | Pezzi Speciali - Special pieces - Pièces spéciales - Piezas especiales - Formstücke

| Formato Size Format Formatos Format | Spessore Thickness Epaisseur Espessor Stärke | Pz/Scatola Pieces/Box Pièces/Boîte Piezas/Caja Stück/Karton |
|---|--|---|
| Gradino 30x30 cm 12"x12" *** | 8,4 | 15 |
| Battiscopa 10x30 cm 4"x12" | 8,4 | 38 |
| Terminale "L" Monolitico 15x30 cm 6"x12" ** | 8,4 | 8 |
| Gradino con Toro Lineare 30x30 cm 12"x12" | 8,4 | 8 |
| Gradino con Toro Angolare 30x30 cm 12"x12" | 8,4 | 4 |

*** Gradino: quantità minima 60 pezzi | Steps minimum quantity 60 pcs - Nez de marche: quantité minimum 60 pcs - Cantidad mínima 60 piezas - Mindestmenge 60 Stück.

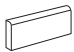

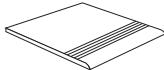

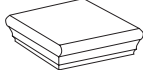
** Terminale "L" : Prodotto con Tecnologia Digitale - Produced with Digital Technology

BORGHI MEDIEVALI OUTDOOR

| Formati Sizes Formats Tamaños Formate |  |  |  |
|--|---|---|---|
| | 30x30 12"x12" | 15x30 6"x12" | 15x15 6"x 6" |
| Superfici Finishes - Finitions Superficies - Oberflächen | STRUTTURATO R11 | STRUTTURATO R11 | STRUTTURATO R11 |
| Spessori Thickness - Epaisseurs Espesores - Stärke | 8,4 | 8,4 | 8,4 |
| ASSISI | • | • | • |
| CHIUSI | • | • | • |
| CERTALDO | • | • | • |
| PIENZA | • | • | • |
| MONTALCINO | • | | • |
| CORTONA | • | | • |
| GUBBIO | • | | • |

PEZZI SPECIALI

Special Pieces - Peces Speciales - Piezas Especiales - Formstücke

| Formati Sizes Formats Tamaños Formate |  |  |  |  |  |
|---|---|---|---|---|---|
| | Battiscopa 10x30 4"x12" | Terminale "L" Monolitico ** 15x30 6"x12" | Gradino 30x30 12"x12" | Gradino con Toro Lineare 30x30 12"x12" | Gradino con Toro Angolare 30x30 12"x12" |
| ASSISI | • | • | • | • | • |
| CHIUSI | • | • | • | • | • |
| CERTALDO | • | • | • | • | • |
| PIENZA | • | • | • | • | • |
| MONTALCINO | • | • | • | • | • |
| CORTONA | • | • | • | • | • |
| GUBBIO | • | • | • | • | • |

** Terminale "L" : Prodotto con Tecnologia Digitale - Produced with Digital Technology